



HM Government  
**G-Cloud**  
Supplier

Microsoft  
Partner  
Gold Cloud Platform

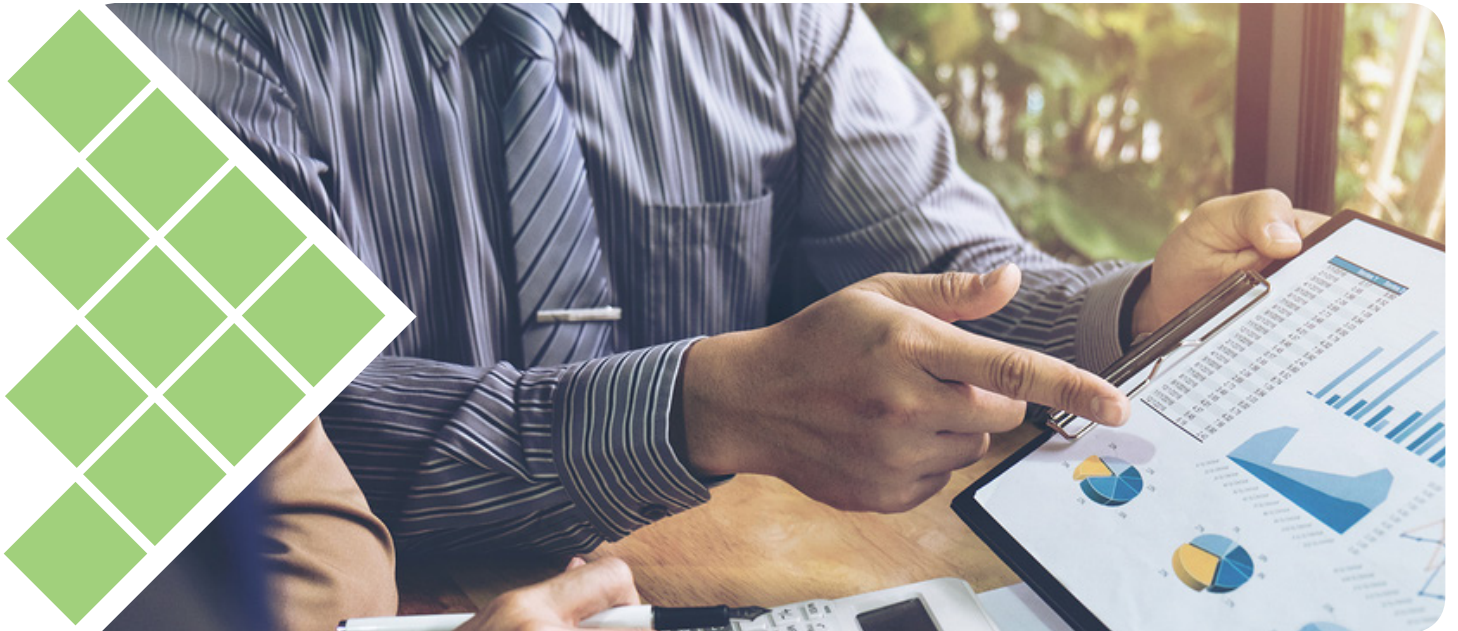


Strategic  
Partner



# Sicon WOP

## Works Order Processing for Sage 200



Sage



Cloud



Training



IT Services

- Create Works Orders from the standard Sage 200 BOM's with version control
- SOP and POP lines can be linked to jobs and shown as commitments
- Stock can be linked to jobs via Stock Control
- Detailed WIP reporting included with standard Sage 200 reports

Paradise Computing Ltd  
Pedigree Farm, Althorp Estate,  
Northampton NN7 4HE

T: 01604 655900  
E: [sales@paradisecomputing.co.uk](mailto:sales@paradisecomputing.co.uk)  
W: [www.paradisecomputing.co.uk](http://www.paradisecomputing.co.uk)

 **Paradise**  
I.T. FOR BUSINESS



# Sicon Job Costing

## Job Costing for Sage 200



### Job Costing

Sicon Job costing is designed specifically for Sage 200, integrating with Purchase ledger, SOP, POP, Stock, Time Recording and Works Order Processing. It provides solutions for clients in manufacturing, construction, software development and all types of contract management.

- Sicon Job Costing intergrates with Purchase ledger, SOP, POP, Stock, Time Recording & Works Order Processing.
- Create Jobs manually, or automate from Sales Order Processing.
- Enter Purchase invoices and link to one or more jobs.
- SOP and POP lines can be linked to jobs and shown as commitments.
- Stock can be linked to jobs via Stock Control, Internal Issues and Returns. Allocated stock is shown as committed stock usage.
- Complex job structures can be created with linked works orders allowing allocation of stock to jobs and assisting the material planning process.
- Labour is recorded directly into job costing but can be planned on the built in scheduler to create committed labour.
- Detailed WIP reporting included with standard Sage 200 reports.
- 100% reconciliation between nominal ledger

transactions and jobs.

- Job enquiry and management screen provide a simple view of jobs, showing all costs, revenues and budgets with drill down to detail and history.
- Instantly identify outstanding sales and purchases as commitments.
- Jobs are quick and simple to setup, just one click will create a job.
- Most data input is carried out in the normal Sage modules removing duplication.
- Budget by cost heading and optionally by period and cost heading.
- Custom job management tabs and fields with linked workspaces available.
- Drill down to sales orders, purchase orders, purchase invoices, stock transactions (works orders when purchased) and any related documents.
- Create phase, stages and sub stages within jobs.

### Easy to learn and easy to use

Screens and processes: are designed for non-IT users.

Jobs are quick and simple to setup: just one click will create a job.

Data: most data input is carried out in the normal Sage modules.

### Industries that can benefit from Job Costing

- Construction
- Manufacturing
- Software Development
- Contract Management

To find out how Paradise can help your business, or to arrange a demonstration, call us today on 01604 655900 or visit our website [www.paradisecomputing.co.uk](http://www.paradisecomputing.co.uk)



Sage



Cloud



Training



IT Services

 **Paradise**  
I.T. FOR BUSINESS